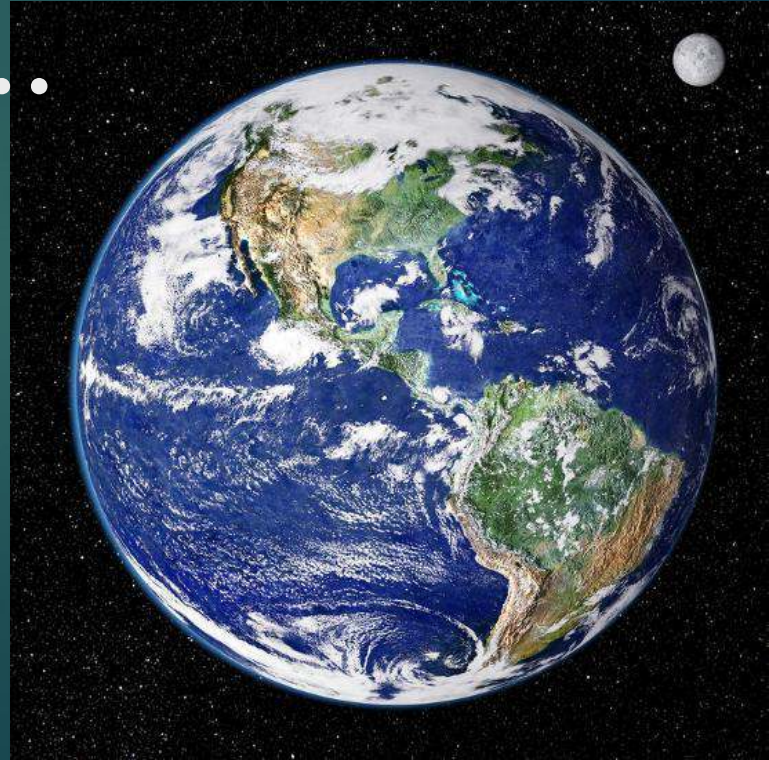
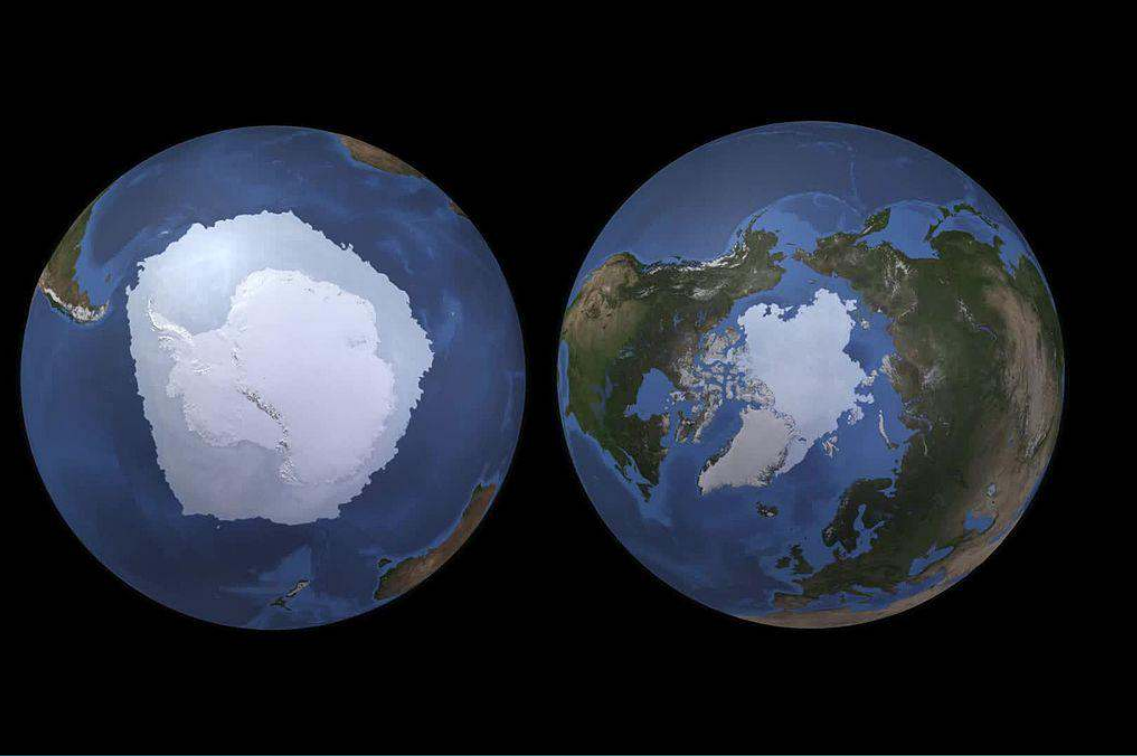




2K's showcase of learning...

Following one of our lines of inquiry... exploring the impact of humans on the environment, we made these observations of Earth from space using Google Earth...





- ▶ Ice islands at the top and bottom of Earth.
- ▶ Earth is mostly blue – lots of water
- ▶ In the middle of Earth there's a green zone.
- ▶ Most land had both green for forest and yellow for desert.
- ▶ There is a thin bright blue ring around Earth – its atmosphere



Our Blue Planet

Big, bold and blue suspended in space too.

Cold as ice on both ends it spins.

Tropical jungle lungs growing like enormous
broccoli,

Beside baron sandy stretches like nothing at all.

A blankety bright ring saves all life within.

Travelling on, this tiny blue speck carries us.



We innovated using 8
word stories about what
we observed from space
and tried to rhyme with
some of the lines.



Taking a closer look at Earth - things
didn't look so good...



We found there was lots of air pollution caused by all the traffic.



There was more air pollution caused by factories and industry.



This is what happens when forests are cut down.





Plastic pollution on the street when people are not respecting the environment.




We looked at the Great Pacific Garbage Patch. This is where our plastic waste ends up. It's bigger than Queensland!

Splutter, Choke in a World with little hope...


Dozers came, trees gone, what a shame.
No trees, no breeze, no home for the bees.
No animals seen because there are less trees.

People came, trees gone, who's to blame?



Pollution in the air and cars everywhere.
Pollution in the sky is bad up high.
Pollution flies in the wind with its wildness.

People came, animals gone, who's to
blame?



Rain came and rubbish flows to the ocean.
Sea creatures have no hope in the ocean.
No animals can be seen amongst plastic.
There.


People came, sea life gone, who's to
blame?

A collaborative song written by 2K



We wondered what could be
done to prevent a plastic disaster!

We came up with the following
action plan? Something that we
could do...



Because we can't recycle soft plastics in our normal yellow lid recycling bin...

We are going to use 'Red-cycle' to recycle all of the soft plastics from our shopping.



It's as easy as dropping it in the bin when you are out shopping.

These plastics include – bread bags, biscuit packaging, lolly packaging, frozen fruit and veg packaging!



Of all our wonderings this one
made us wonder the most...

2K wonders why Aspley State
School does not recycle plastic
like we do at home in our
yellow lid bins?





Thanks for listening

...we hope you can help too.