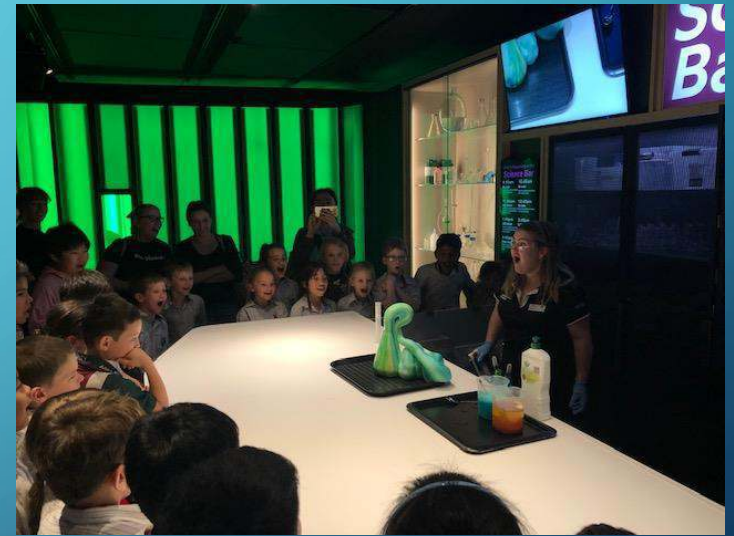
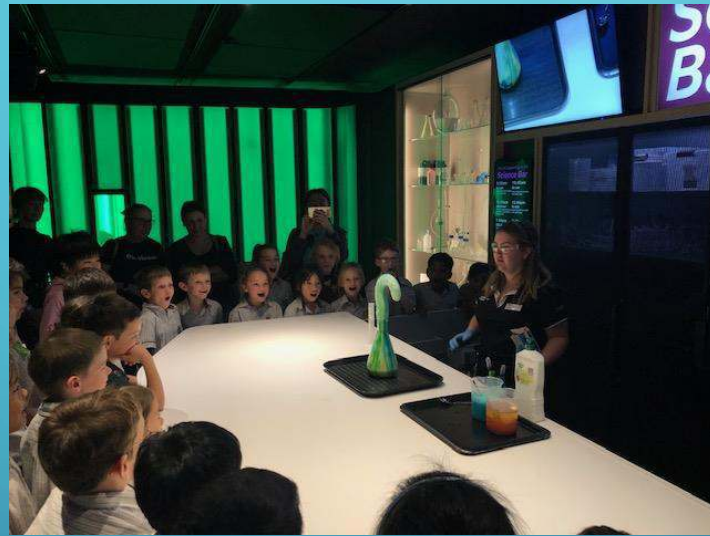
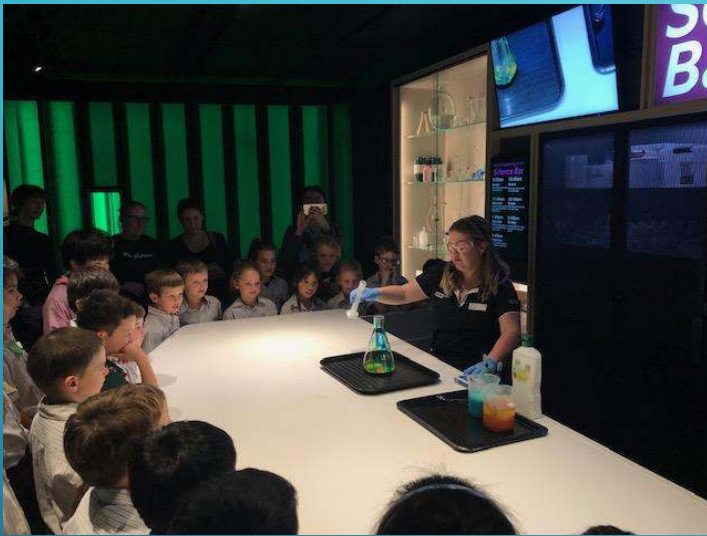


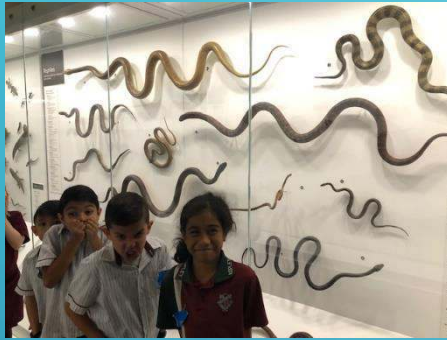
2S ASSEMBLY SHOWCASE



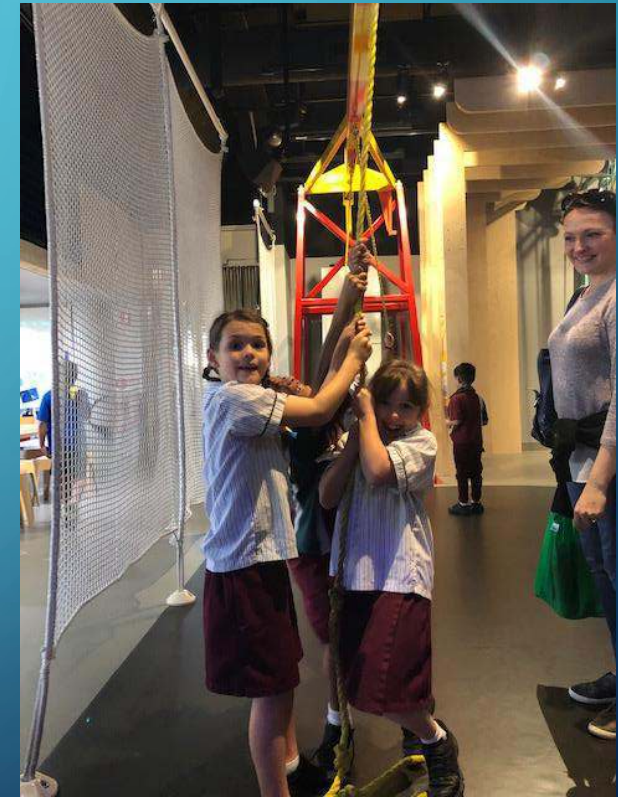
I WONDER WHICH INGREDIENT WAS ADDED TO MAKE
THE POTION ERUPT.



I WONDER HOW LONG IT TAKES TO
TAXIDERM MY A LARGE ANIMAL LIKE THE
BIG BULL SHARK.



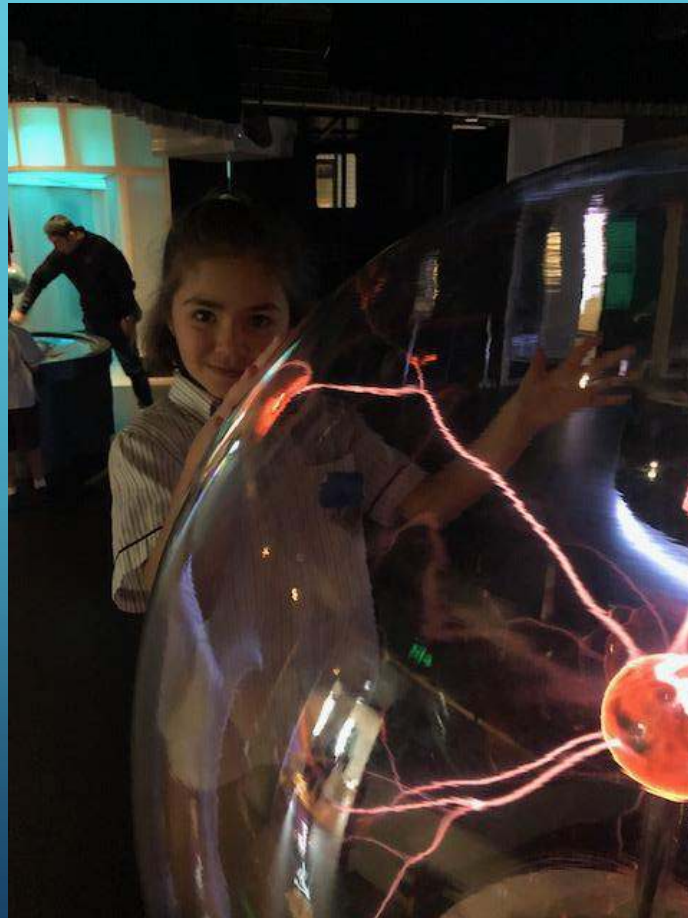
I WONDER WHY IT IS EASIEST TO LIFT
THE 80KG FRIDGE FROM THE ROPE
FURTHEST AWAY.



I WONDER WHY THERE ARE DIFFERENT
CLIMATE ZONES ON EARTH.



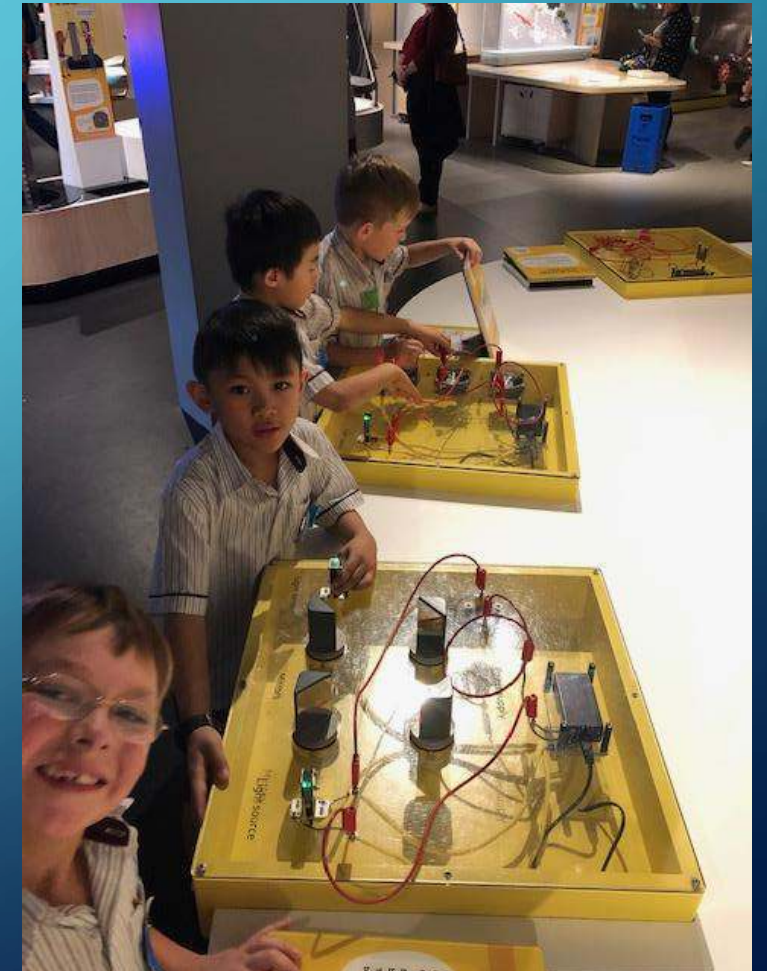
I WONDER WHAT IS INSIDE THE
GLASS BALL TO CREATE THIS.



I WONDER WHY A PAPER AEROPLANE
IS NOT AS AERODYNAMIC WHEN THE
AIR IS MOVING VERTICALLY.



I WONDER WHY THE FAN ON THE
CIRCUIT DIDN'T WORK WHEN I
CHANGED THE WIRES.



I WONDER HOW THE DIFFERENT
COLOURED REFLECTIONS ARE CREATED
ON THE WALL.



I WONDER WHY ONE OF THE PULL UP CHAIRS IS HARDER TO PULL YOURSELF UP ON THAN THE OTHER.



I WONDER WHY THE WATER
VIBRATES WHEN THE VOLUME
BECAME LOUDER.



I WONDER HOW YOU CAN BREAK THE
MAGNETIC FORCE AND HOW THE SPIKES
WERE CREATED.



I WONDER WHY THE BALLS MOVED IN
FIGURE OF EIGHTS AND DIDN'T DROP
STRAIGHT DOWN TO THE HOLES.



I WONDER IF THE VEHICLE WILL MOVE FASTER OR SLOWER WITH THE TWO SAILS POINTING THE SAME DIRECTION.



HMM... I WONDER HOW WE COULD
PERSUADE OUR TEACHERS TO GO ON
ANOTHER EXCURSION.



A decorative graphic on the left side of the slide consisting of white lines and circles on a blue gradient background, resembling a circuit board or a stylized tree structure.

THANK YOU FOR LISTENING!

WE HOPE THAT YOU ARE
WONDERING ABOUT A FEW NEW
THINGS NOW TOO.